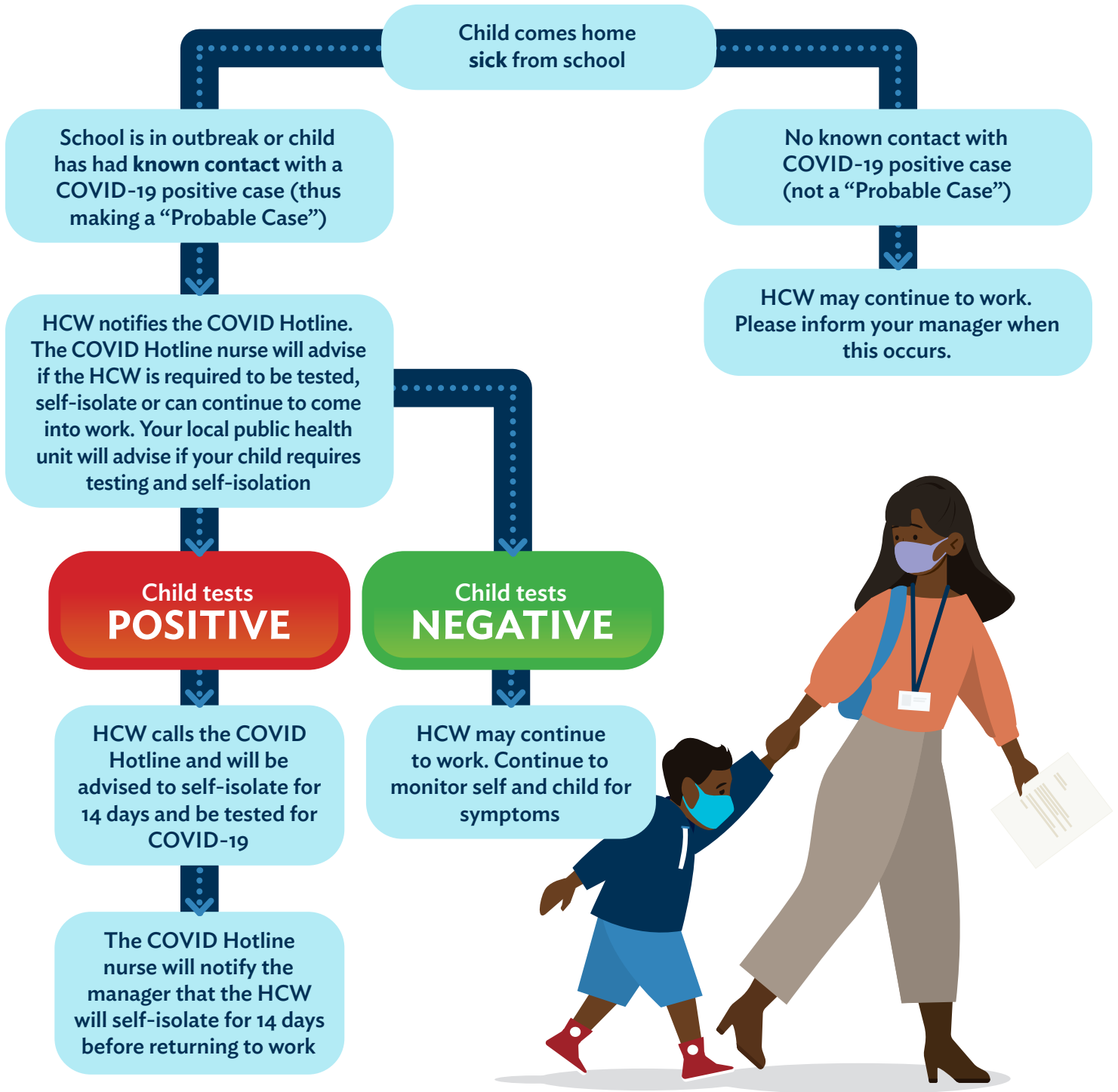


Decision Tree: Work and Back-to-School

For St. Joe's Healthcare Workers (HCWs) Who Have Care Giving Responsibilities



St. Joe's COVID Hotline: 905-522-1155, ext. 36131

Hours: 7 days a week, 7:00 am – 7:00 pm
(after-hours: please leave a message)

If at any time a HCW is symptomatic, they should call the COVID Hotline for further direction and not come to work.

Updated September 8th 2020. The decision tree above may change based on Public Health information.