

Centre For Interventional Radiology And Oncology (CiRO)

The new Centre for Interventional Radiology and Oncology (CiRO) at St. Joseph's Healthcare Hamilton's Charlton Campus provides minimally invasive image guided treatments or procedures that offer less risk, less pain and less recovery time compared to open surgery.

CiRO at St. Joseph's Healthcare Hamilton delivers high quality, innovative, patient focused clinical services supported by an active research environment.

What Is Gastrostomy/ Gastrojejunostomy?

Gastrostomy tube placement involves the placement of a feeding catheter directly through the abdominal wall into the stomach. A gastrojejunostomy tube placement is a similar technique with the tube being placed through the stomach and duodenum into the jejunum, which is a part of the small intestine. Tubes may also be placed by image guidance placed directly into the jejunum which is part of the small bowel.

Questions?

We encourage you to ask questions to your health care team at any time. Please find our contact information below to connect with us.

Contact

CiRO 905-522-1155 Extension: 35387

Maps and directions



The Centre for Interventional Radiology and Oncology is located at:
St. Joseph's Healthcare Hamilton's
Charlton Campus
Bishop Dowling, Level 1, D154
50 Charlton Avenue East
Hamilton, Ontario L8N 4A6

St. Joseph's
Healthcare  Hamilton

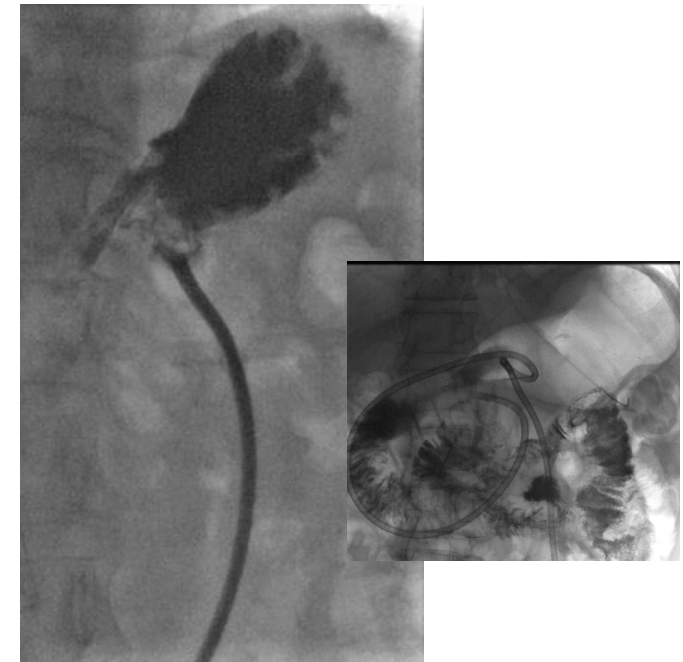
www.stjoes.ca

Centre for Interventional Radiology and Oncology (CiRO)

Department of

Diagnostic Imaging

Gastrostomy/Gastrojejunostomy



St. Joseph's
Healthcare  Hamilton

www.stjoes.ca

How This Procedure Helps

This procedure is performed when it is determined that a patient can no longer meet nutritional needs through normal swallowing/eating methods. This is an option for patients undergoing chemotherapy or other cancer treatments, stroke victims or stroke patients with risk of aspiration.

Your Care Team

Gastrostomy / Gastrojejunostomy tube placements will be done in the in the angio suite within CiRO department by a interventional radiologist. Our team consists of doctors, nurses and medical radiation technologists.

How To Prepare For A Gastrostomy/Gastrojejunostomy

- Do not have anything to eat or drink from midnight before your procedure .
- Please take all of your medication except blood thinners, with a small sip of water.
- If you're a diabetic follow your normal routine

What Happens During Procedure?

The interventional radiologist will spray freezing in the back of your throat. A small catheter or tube will be inserted into your nostril or into the back of your throat. This allows the doctor to inflate your stomach with air in order to see the position and outline of your stomach.

Once the stomach can be easily viewed, local anaesthetic is applied to skin and small nick is made in the skin.

A guide wire will be advanced to the required area, either the stomach or the jejunum. A plastic tube will be placed in position and advanced to the end location. A portion of the tube will be outside of your body, with a port that can be used for feeding and medication administration.

When You Arrive

- When you arrive please check in at CiRO reception
- You will be brought to the waiting room where a nurse will meet with you and get you ready for the procedure
- An intravenous will be placed into your arm
- You will be asked about your medication history and list of current medications
- You will be required to change into a hospital gown for this procedure
- Your interventional radiologist will explain the procedure and answer any questions
- If you agree to the test, you will be asked to sign a consent form

After Your Procedure

You will be taken back to the CiRO recovery area where you will rest quietly in bed for 1-2 hours. Your vital signs will be monitored frequently. Once this time period is over, you will be discharged home. You must have a responsible adult to accompany you home and stay with you overnight. You will not be allowed to drive, operate heavy machinery or make any legally binding decisions for 24 hours following the procedure. You will be able to start feeding after 6-8 hours.

After Care Instructions

Blocked Tube:

- Using a syringe, gently push 15 ml of warm water into your feeding tube.
- If this does not clear the feeding tube, call the Interventional Radiology department for an outpatient booking to exchange the catheter
- After hours or on week-ends, please go to the nearest Emergency dept.

Tube Falls Out:

- Do not try to flush or replace the feeding tube yourself.
- Cover the area where the tube was in your body with a clean paper towel or gauze.
- Call Interventional Radiology for an outpatient appointment for the same day.
- After hours or week-ends, please go to the nearest Emergency dept.

Risks Of The Procedure

Possible risks/complications of having a Gastrostomy or Gastrojejunostomy inserted are bleeding, infection and perforation. Every precaution is taken to prevent these from happening. On rare occasions, severe complications may require hospitalization for complications or an operation to repair any damage to the stomach or intestines.